



Tag, Scan & Manage with iLivestock



iLivestock
www.ilivestock.co.uk

TAG**SCAN****MANAGE**

iLivestock
www.ilivestock.co.uk



iLivestock allows you to order your tags through the **Allflex Tag Box** at the touch of a button, even in the field.

Allflex Ultra Cattle Tags



Allflex Ultra cattle tags are manufactured from high quality plastic and incorporate design features to ensure free rotation whilst in the ear; providing reliability and readability. Also available in EID and TST options and with management space. Apply with the red Universal Applicator (B06).

Manufactured from quality stainless steel, QWIKSILVER tags won't rust or corrode; ensuring readability and improved comfort as a result of lower risk of infection. Apply with the blue Qwiksilver applicator (364).

Bubblegum Sheep Tags



Concealing the transponder in the tag pin allows for excellent weight distribution. Manufactured from ultra-flexible plastic, the tip of the tag pin has a cross cut point which helps tag application by cutting through ear tissue as opposed to punching. Apply with the aluminium Bubblegum applicator (B49).

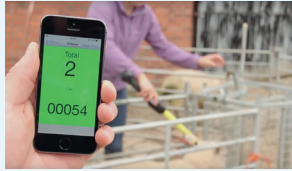
Speed up recording and drafting with the RS420

QUICK SCAN

Use Quick Scan and your RS420 to add weights, scan results and breeding information to your records quickly.

DRAFTING

As you scan your animals with the RS420 your device will indicate with a red or green screen whether to draft the animals in or out based on the filters you have set.



MOVEMENTS

Scan animals as you are moving them and iLivestock will produce a print ready movement sheet.

GROUPS

Use the RS420 to scan tags to create animal records and set up groups.



We scanned 53 sheep this morning in less than one minute. Before we had the stick reader, I was calling out tag numbers which so often got lost in translation by the time they were written down, or sometimes were difficult to read.

Tom Hutchinson

ANIMAL INFORMATION

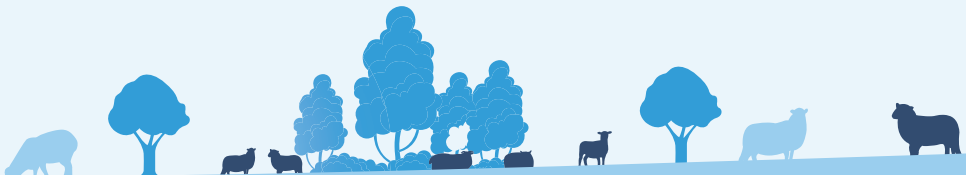
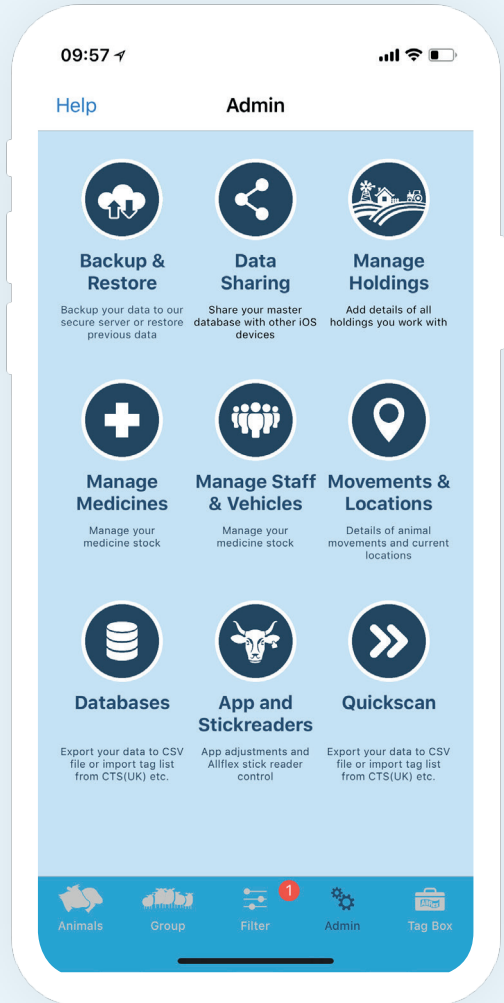
iLivestock Animal Information screens provide all of an animals data at a glance.

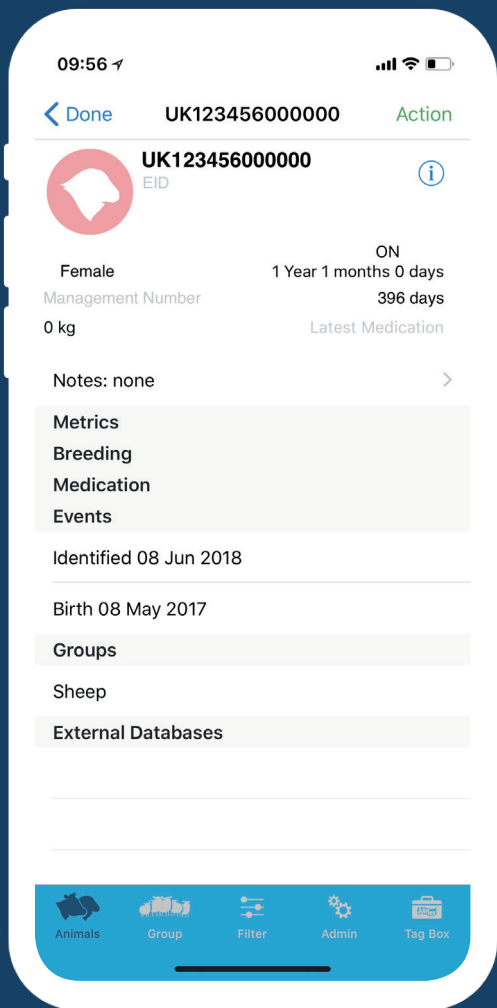
COMPLIANCE

iLivestock helps you keep compliant records, it meets all government standards covering movements, medicines and medication records. Export and print your movements, flock, herd and medicine books.

MEDICATIONS

iLivestock helps you keep track of your medicine stocks as well as registering withdrawal periods to treated animals.





GROUPS

Create groups and apply actions such as movements or medications or merge animals from one group to another. Groups can be created from existing or new animal data.

FILTERS

A range of 48 filters allow you to select animals for drafting that meet your criteria.

BREEDING INFORMATION

Add breeding information to your animal records to track the performance of your bloodlines. The animal breeding section allows you to record pregnancy scanning, birth and progeny data against individual animals, this information can be filtered to calculate the performance of each breeding animal.

DATABASES

Import and export data from BCMS/CTS. Run reports on your data for export via email.



Versatile mobile handling and weighing systems help you to keep track of DLWG and to treat or draft animals quickly and easily.



Use iLivestock and an RS420 in conjunction with a mobile handling system to easily draft groups of animals and record treatments and weights, see our Livestock Handling brochure for more details.

Allflex

Animal Intelligence, for life



0%

FINANCE AND FIXED MONTHLY PAYMENTS



Prattley

Whether to maximise lamb sales or ensure correct dosing rates, regular and accurate weighing can have a significant impact on farm profitability.

Our interest-free finance packages make owning a livestock handling and weighing system more affordable than ever.



0845 600 80 81 Quoting Finance18

Minimum order value £6000.00 excl VAT. Credit subject to status. Other fees apply. Allflex UK Group Ltd is an Introducing Appointed Representative of Rural Finance Ltd. Alligator, Prattley and TruTest are distributed in the UK by the Allflex UK Group.

Hill farm benefits from technology investment

Tom and Kay Hutchinson, tenant farmers on a hill farm in County Durham, invested in electronic identification and data gathering technology for the first time this year with the Allflex supplied RS420 stick reader, which links to the flock and herd management application, iLivestock.

"This is the way everything is going and we wanted to learn before it became a necessity," says Kay, who admits she had only really worked with basic word processing and email programmes before. "We tag and record all our stock anyway, and there's a lot of paperwork involved with the prefix of pedigree Limousin and Hereford cattle.

"We liked that this system has sheep and cattle records in one place," says Tom. "Everything is so instant and if you have an inspection, there's no panic or major preparation as it's all there on the iPad or mobile.

It's really great at tugging time too. It's easy to think you will remember individual animals from one year to the next, but so much happens in between. With the iLivestock app, I can track back as far as great-grandparents and double check I am not putting a ewe in a field that's related to the tup. It compensates for my bad memory! I just love the scope of what you can do with the app, and it's constantly moving forward. It's just a much more efficient and accurate way of working."

When considering a leap into the world of technology,

it can be a daunting process both financially and practically, but the Allflex technology has been designed so you can build up in stages, and also to be straightforward to use. You can start simply with ear tags and the iLivestock app to log key information.

The stick reader may come next, and, ultimately you can invest in handling and weighing systems, that all link to iLivestock. Mark Lawrence, Allflex UK Group Ltd Marketing Manager, says:

"We are seeing livestock farmers engaging more and more with the technology, and, as a result, getting more out of it. The EiD stick reader and iLivestock software essentially allows farmers to make better use of the data that tags provide. This can be keeping within the law on recording stock movements or building up a picture of their stock performance all the way from tugging and scanning through to production. Farmers can look back to see which ewes had a good lambing, or those that didn't have milk, and use all this data to maximise flock performance and create efficiencies in their business."

"I can track back as far as great-grandparents and double check I am not putting a ewe in a field that's related to the tup."



Livestock Intelligence

For more information:

Tel: 0845 600 9070

www.allflex.co.uk