



# RESOURCE GUIDE





## Index

2-3	Cattle Tags (2 Piece Tags)	18-19	Applicators & Accessories
4-7	Swine and Multi-Species Tags	20-25	Destron Fearing
8	Sheep Mini Tag	26-27	Handheld EID Readers
9	A-Tag™ Cow & Calf (1 Piece Tags)	28-29	Stationary Readers
10	Official Tags	30	Managing EID Data
11	Custom ID	31	Allflex Connect
12	A-Tag™ Feedlot V2	32-34	Tissue Sampling Technology
13	Advantage Feedlot Tags	35	Tag Marking Pens
14	Allflex Feedlot Tags	36-37	Allflex
15	Custom Feedlot Tags	38-49	Syringes
16	Electronic ID	50	EID Tag Placement
17	Matched Sets	53	EID Tag/TSU Lookup

### Get The Allflex Advantage

Allflex has more experience in livestock identification than any other manufacturer and we're committed to helping people with high quality products needed in the livestock industry. For products that exceed industry standards for performance, you can rely on Allflex. As an Allflex customer, you'll benefit from a proven track record for innovation and products designed for your needs.

---

**Innovation:** From pioneering electronic identification systems and creating the first custom, laser ink, marked visual identification tag, to leading the industry in tamperproof tags, and Tissue Sampling Units, we're dedicated to finding new and better products for the market we serve.

---

**New Products:** We consistently introduce new and improved products based on sound manufacturing and an understanding of how those products need to perform in real-world conditions.

---

**Service:** Count on professional field sales, customer service and technical staff who will help identify the right solution for specific operations and share best practices to achieve the maximum in product performance. You can count on reliable supply and delivery ... which means producers will have the tags and equipment when they need it.

**For questions about these products or how to get started, contact Allflex at 1-800-989-TAGS (8247) or visit [allflexusa.com](http://allflexusa.com)**



It All Starts With A Tag.

# Global Tags for Cattle

Allflex Global Tags are packaged standard in sets of 25 – blank or numbered sequentially. Other tag combinations are available upon request.

Black tags available in Super Maxi, Maxi and Large Female only. Black tags are laser marked with white characters.

Classic Purple available in Maxi and Large Female only.



## Global Super Maxi Female

- Used primarily for mature cattle
- Laser-ink management number standard
- Largest panel for management information
- Highly visible from both front and back
- Especially useful in cold climates for animals with longer hair
- Packaged with Global Small Male

## Global Maxi Female

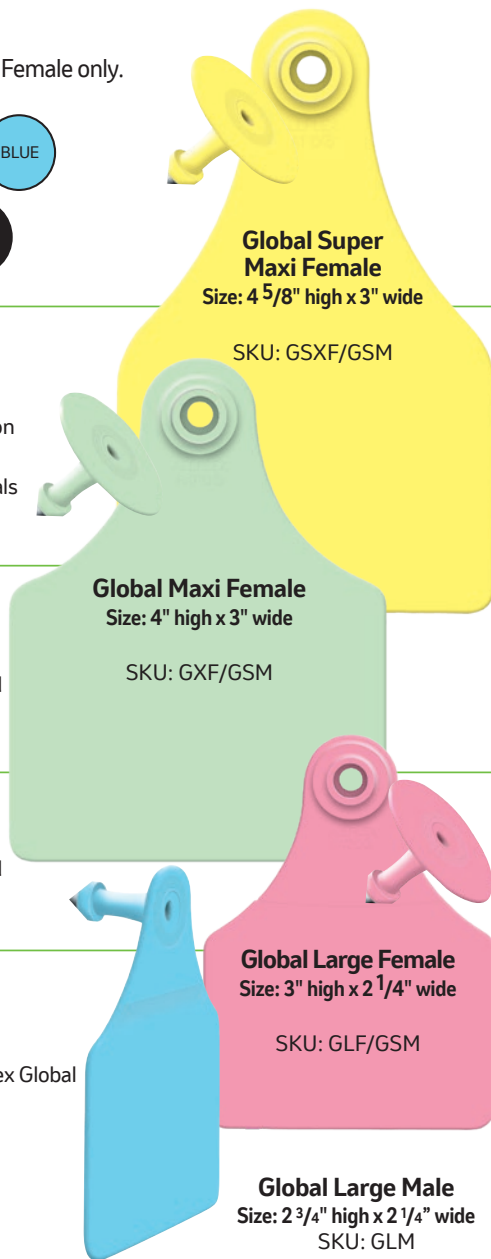
- Our most popular size for both mature cattle and calves
- Laser-ink management number standard
- Excellent for beef and dairy cattle
- Packaged with Global Small Male

## Global Large Female

- Used primarily for calves
- Laser-ink management number standard
- For use in beef and dairy cattle
- Packaged with Global Small Male

## Global Large Male

- Best used for beef and dairy cattle
- Provides visibility from behind an animal
- Can be used in combination with any Allflex Global Female tag
- Packaged without female tags (quantities of 25)



**Global Super Maxi Female**  
Size: 4 5/8" high x 3" wide

SKU: GSXF/GSM

**Global Maxi Female**  
Size: 4" high x 3" wide

SKU: GXF/GSM

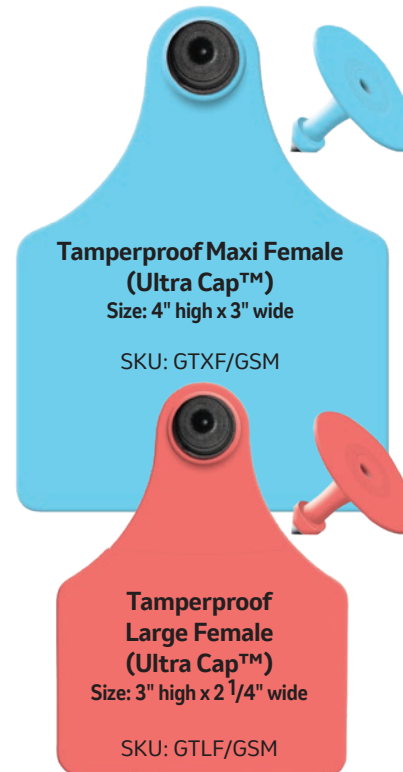
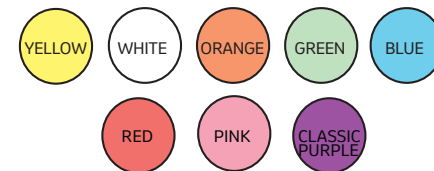
**Global Large Female**  
Size: 3" high x 2 1/4" wide

SKU: GLF/GSM

**Global Large Male**  
Size: 2 3/4" high x 2 1/4" wide  
SKU: GLM

# Tamperproof Tags for Cattle

Patented Allflex Tamperproof ear tags offer the foremost security in livestock identification and management.



**Tamperproof Maxi Female (Ultra Cap™)**  
Size: 4" high x 3" wide

SKU: GTXF/GSM

**Tamperproof Large Female (Ultra Cap™)**  
Size: 3" high x 2 1/4" wide

SKU: GTLF/GSM

- Tamperproof tags are ideal for Official Registration and Certification Programs, as well as Official ID Markets
- Allflex Tamperproof Female tags feature either the exclusive Ultra Cap™ or the Rotaclip™ design
- Can be used in combination with any Allflex male tag
- Packaged standard with Global Small Male

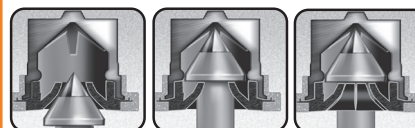


**Tamper-evident Small Female (Rotaclip™)**

Size: 1 3/16" diameter  
SKU: GSTF

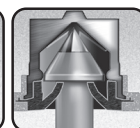
## Allflex's Exclusive Ultra Cap™

Tamperproof Maxi Female and Tamperproof Large Female



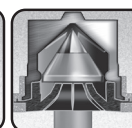
1

On entry into female, the male tip forces the exclusive Ultra Cap™ to spring open inside.



2

When tip has fully entered, Ultra Cap™ snaps back to lock tag solidly in place.

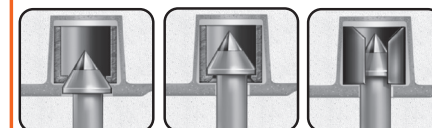


3

Ultra Cap's™ hard ridge and female's molded ridge doubly secure tag. Ultra Cap™ allows female to turn on male stem to help prevent snagging.

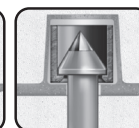
## Allflex's Exclusive Rotaclip™

Tamperproof Small Female



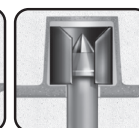
1

On entry into female, the male tip forces the exclusive Rotaclip™ to spring open inside.



2

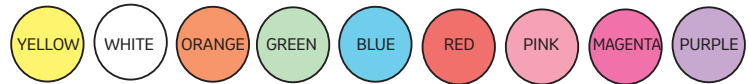
When tip has fully entered, Rotaclip™ snaps back to lock tag solidly in place.



3

Rotaclip's™ hard ridge and female's molded ridge doubly secure tag. Rotaclip™ allows female to turn on male stem to help prevent snagging.

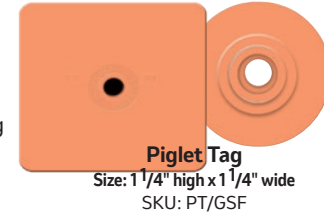
## Piglet, Integra, and Hog Male Tag Colors



### Piglet Tag

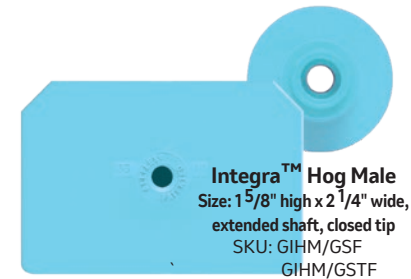
*LASER MARKING ONLY*

- Light weight tag and unique metal-free tip - specifically designed for piglets from birth to 40 lbs.
- Enhanced plastics minimize the effects of biting and chewing
- Designed to avoid over-application and infection problems
- Durable laser marking



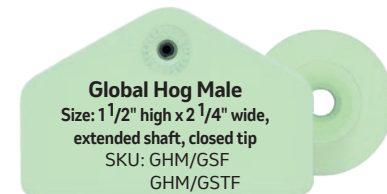
### Integra™ Hog Male

- Large panel holds more management information
- Longer male stem allows for higher tag placement in ear
- Lays flat to resist snagging and chewing
- Laser-ink available on management numbers larger than 1/2"
- Used in combination with Global Small Female and Tamperproof™ Small Female tags



### Global Hog Male

- Longer male stem allows for higher tag placement in ear
- Lays flat to resist snagging and chewing
- Laser-ink available on management numbers larger than 1/2"
- Used in combination with Global Small Female and Tamperproof™ Small Female tags



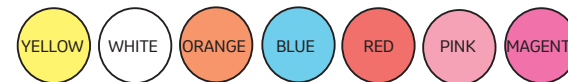
### Official USDA Swine Premises Tags

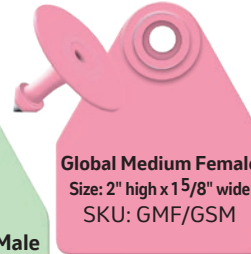
- Tags must be applied prior to harvest channel entry
- Tags must have premises ID number and shield
- Cull sows and boars required to have PIN tag
- PIN of last farm required
- Additional colors now available

Size: 1 5/8" high x 2 1/4" wide, extended shaft, closed tip  
SKU: USDA-GIHM1/GSTF-COLOR



*Official USDA Swine Premises Tags*





### Global Medium Female

- Used for calves, hogs, goats and sheep
- Laser-ink available on management numbers larger than 1/2"
- Packaged standard with Global Small Male

### Global Medium Male

- Packaged standard with Global Small Female
- Laser-ink available on management numbers larger than 1/2"
- Also available blank in packages of 25 without female companion



### Global Small Male

Size: 1 3/16" diameter

SKU: GSM (Shaft length 22.3mm, Tip Color: Black)  
GESM (Shaft Length: 25.3mm, Tip Color: Silver)

### Global Small Male

*LASER MARKING ONLY*

- Engineered for superior retention
- Numbered Global Small Male packaged standard with blank Global Small Female
- Also available with extended shaft for thicker ears
- Available blank in packages of 25 without female companion
- GESM only available in Yellow, White, Orange, Green, and Blue



### Global Small Female & Tamperproof Small Female tags

Size: 1 3/16" diameter

SKU: GSF & GTSF

### Global Small Female & Tamperproof Small Female tags

*LASER MARKING ONLY*

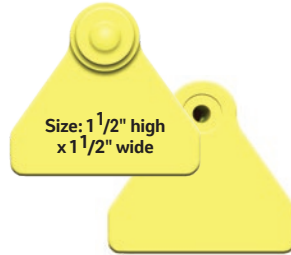
- Blank Global Small Female or Tamperproof Small Female packaged standard with Global Small Male, Medium Male, Hog Male, Integra Hog Male and Piglet tags
- Also available blank in packages of 25 without male companion



## Sheep Mini

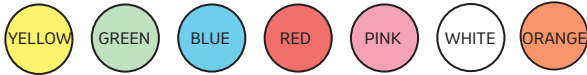
LASER MARKING ONLY

- Light weight and flexible enough for the smallest goat kids and lambs
- Easy to apply, utilizes Allflex Universal Total Tagger
- Durable laser mark
- Used In Official Livestock Programs including the USDA Scrapie Eradication Program
- Packaged in bags of 25
- Sold as a set, not available for order separately

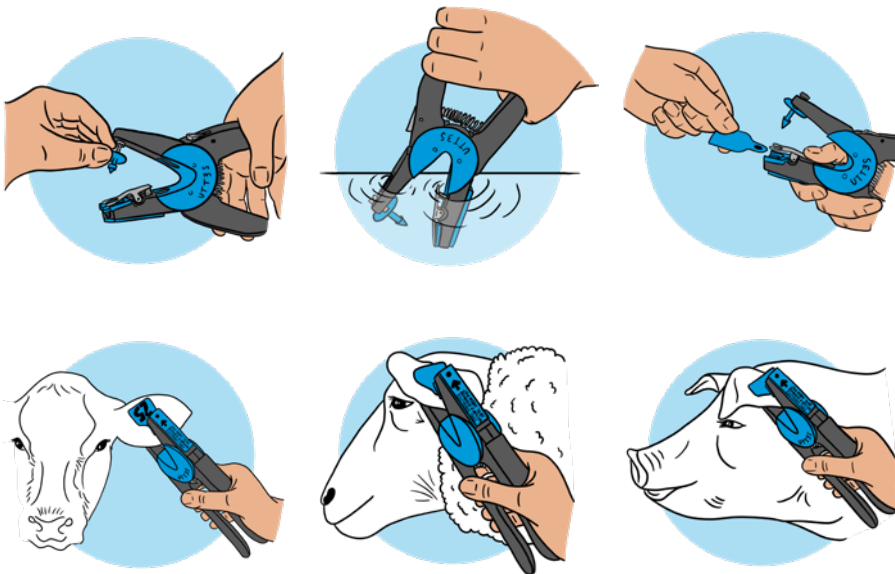


SKU: SMF/SMM

Tag Colors:

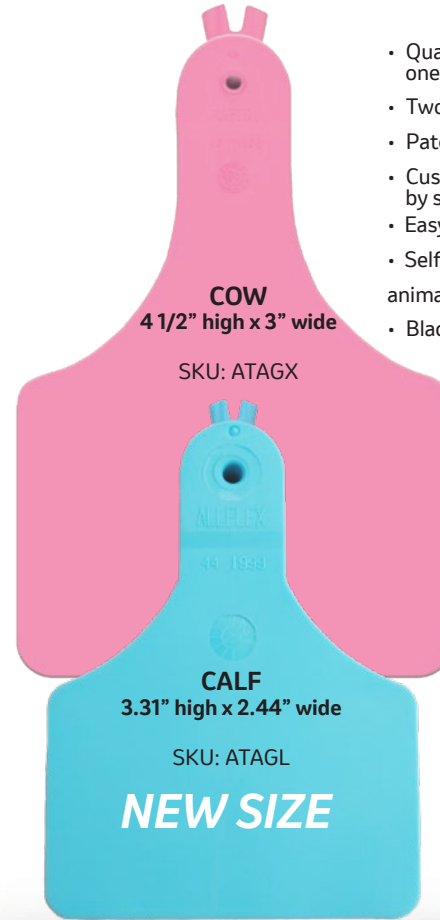


## Tag Application for Two-Piece Tags



## A-Tag™ One-Piece Tag

- Quality materials and construction in new, one-piece tag
- Two convenient sizes
- Patented laser-ink permanent marking
- Custom marking and numbering available by special order
- Easy one-piece application
- Self-piercing, pinhole tip means faster healing, reduced animal stress
- Black A-Tags are laser marked with white characters



Cow/Calf Tag Colors:



## A-Tag™ One-Piece Applicator

- To be used exclusively with A-Tags™



SKU: APP-ATAG

A-Tag™ Replacement Pin  
SKU: PIN-ATAG



## Animal Disease Traceability System AIN Tags

The ADT program is a cooperative Federal-State-Industry Program, providing a standardized information system for Federal and State animal-health authorities to use in responding to animal-disease events in the United States. These tags all start with the numbers 840 which is the global standard for US origin animals. Individual EID tags or tag sets can include coding protocol.

In order to obtain AIN tags, producers must first register their premises and obtain a premises identification number (PIN) from their state animal health authority. A database record of specific AIN tags distributed to each premises is maintained, so producers should not share or make their AIN tags available to other producers.

Producers may apply the AIN tags at their convenience and at the time most suitable to their operation, but before an animal leaves their premises.



**Large FDX**

SKU: USDA-FDX840/GTLF1-GSM-COLOR



**Maxi HDX**

SKU: USDA-HDX840/GTXF1-GSM-COLOR



**ATag™ Cow HDX**

SKU: HDX-840/ATAGX-COLOR-SET16

## Allflex Custom ID is the Producer's Choice

Allflex Custom ID tags work harder for you. A tool kit of sizes, colors, and types serve the unique ways you sort, manage and market your cattle. Customize tags with an ID system in crisp, clean, permanent laser-ink marking. And place a proud brand on your tags to make a mark for your legacy.



- Allflex offers permanent, customizable markings on premium quality 2-Piece Global, Tamperproof and A-Tag™ One-Piece tags with Laser and Laser-Ink Marking
- There are multiple customization options available giving you the flexibility to create something as simple or complex as you need
- Tag colors and marking options will vary depending on tag selection

### Customize Your Information

- Producers can use a variety of information fields available on different tags to truly customize their identification
- Use identification to measure what matters on your livestock operation
- Custom ID tags can include:
  - Brands and other images
  - Combinations of letters and numbers including farm or ranch name and location
  - Reverse side markings on the back of the tag
  - Custom numbering that's tailored to your management program
  - Birth dates and years
  - Sire and dam information

### Premium Black Tags

- Allflex Producer's Choice Custom ID includes premium black ear tags in three Global Tag sizes: Super Maxi Female, Maxi Female and Large Female
- The premium black tags feature permanent white Allflex laser marking
- Black Allflex Global Small Male Tags are available blank as a matching companion or to contrast with other Allflex Global Tag colors

Premise Number or LID is required to purchase 840 tags, these can be obtained from your State Department of Ag.

Visit [allflexusa.com](http://allflexusa.com) to find an online distributor

## A-Tag Feedlot V2 Tag Colors



## Advantage and Maxi Advantage Feedlot Tag Colors



### A-Tag Feedlot Tag V2

- Self-piercing, pinhole tip means faster healing, reducing animal stress
- Easy one-piece application
- Small incision results in quicker healing
- Apply with Allflex A-Tag V2 One-Piece Applicator

*Redesigned  
Self-piercing Tip  
and Oval Stem*

*New quick-insert  
application method*



**A-Tag Feedlot Tag V2**  
Size: 4 1/2" High x 3" Wide  
SKU: ATAG



**Advantage Feedlot Tag**  
Size: 4 3/4" high x 2 3/4" wide  
SKU: AF

### Advantage Feedlot

- Unique shape with more panel space for marking
- Engineered neck and shoulder to reduce twisting
- Advanced pliable material for longevity and easy stamping
- Custom marking and on-site hot stamping options
- Fast application with the Allflex Easy Applicator Knife

### Maxi Advantage Feedlot

- Unique shape with extra large panel space for marking
- Engineered neck and shoulder to reduce twisting
- Advanced pliable material for longevity and easy stamping
- Custom marking and on-site hot stamping options
- Fast application with the Allflex Easy Applicator Knife

### A-Tag V2 One-Piece Applicator

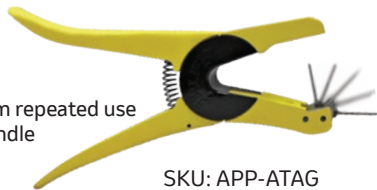
- For use with A-Tag Feedlot V2
- Deep jaw makes proper placement easier
- Grip is designed to ease hand fatigue from repeated use
- Replacement applicator pin located in handle
- Accommodates new quick-insert application method



SKU: APP-ATAG-V2

### A-Tag One-Piece Applicator

- For use with A-Tag One-Piece Tags
- Deep jaw makes proper placement easier
- Grip is designed to ease hand fatigue from repeated use
- Replacement applicator pin located in handle
- Not for use with quick-insert application method on the A-Tag Feedlot V2



SKU: APP-ATAG  
**A-Tag Replacement Pin**  
SKU: PIN-ATAG



**Maxi Advantage Feedlot Tag**  
Size: 5 1/2" high x 2 3/4" wide  
SKU: MAF

### Allflex Tag Knife

- To be used exclusively with the Advantage and Maxi Advantage Feedlot Tags
- Grip design allows for speedy tag application
- Stainless steel heat treated blade



**Allflex Easy Applicator Knife**  
SKU: APP-FL-KNIFE



## Allflex Feedlot Tag Colors



**Allflex Feedlot Tag**  
Size: 4 1/4" high x 3" wide  
SKU: FL

Allflex Feedlot Tags are stocked in packages of 50 blank tags. Lot numbering, sequential numbering and custom marking are available by special order.

### Allflex Feedlot Tag

- One-piece tag engineered for retention and readability
- Small oval incision of Allflex Feedlot Tag results in quicker healing
- Large panel for multiple lines of information and custom marking
- Apply with Allflex Feedlot Applicator (Manual or Air)



### Manual Allflex Feedlot Tag Applicator

- Easy to use for safe feedlot tag application
- Replacement anvil and pin available
- To be used exclusively with Allflex Feedlot Tags

### Allflex Feedlot Tag Applicator

SKU: APP-FL

### Replacement Pin

SKU: PIN-FL

### Anvil

SKU: APP-FL-ANVIL



### Compressed Air Allflex Feedlot Tag Applicator

- Designed for volume tagging
- Easy to use for safe feedlot tag application
- Replacement pin available
- Available for lease to Allflex feedlot customers
- To be used exclusively with Allflex Feedlot Tags

SKU: APP-FL-AIR \*LEASED PRODUCT

For lease terms, contact your local Merck Animal Health distributor or Merck Animal Health Representative



**FL2**  
SKU: FL2-COLOR



**FL19**  
SKU: FL19-COLOR



**AF1**  
SKU: AF1-COLOR  
Factory printed numbers are high resolution ink only.



**MAF8**  
SKU: MAF8-COLOR



Additional customization can be stamped at feed yard using Allflex Hot Stamp Press.

*Additional Custom Layouts Available*



### Allflex Hot Stamp Press

- Digital tag counter
- Stamps all types of Allflex Feeder tags
- Smaller, more compact
- Digital controls for temperature dwell time
- Controls are separate from the press
- **Available by lease only**

**FOIL:**  
SKU: PP29000  
3" wide by 500" long



**HDX Ultra EID Tag,  
Extended Small Male**  
SKU: TFI-HDXOTP982-W/GESMW

## High Performance Half Duplex HDX Ultra EID Tag

- HDX technology optimizes signal transmission and provides greatest possible read distance
- Tamperproof Ultra Cap™ provides ultimate security and retention
- ISO Compliant
- HDX Tag weight: 8 grams
- Packaged in quantities of 10, 20, 25, 50, 250 and 1000



**FDX Ultra EID Tag,  
Extended Small Male**  
SKU: TFP-FDXOTP982-Y/GESMY

## Standard Performance Full Duplex FDX EID Tag

- FDX technology
- Tamperproof Ultra Cap™ provides ultimate security and retention
- ISO Compliant
- FDX Tag weight: 9 grams
- Packaged in quantities of 20, 25, 50, 250 and 1000



**Lightweight FDX EID**  
SKU: TF-FDXOTP982LW -Y/GSMY

## Standard Performance Full Duplex FDX Lightweight EID Tag

- FDX technology
- ISO compliant
- FDX Lightweight tag weight: 4 grams
- Packaged in quantities of 20, 50 and 250



**B80**  
SKU: B80-FDXOTP982-Y/GESM-Y-20

## Standard Performance Full Duplex FDX B80 EID Tag

- FDX technology
- ISO compliant
- FDX Lightweight tag weight: 3.5 grams
- Packaged in quantities of 20
- Non-Tamperproof



**HDX Reusable EID Tag,  
Extended Small Male**  
SKU: SFI-HDXOTP982-Y/GESMY

## HDX Reusable High Performance EID Tag

- HDX Technology
- ISO Compliant
- HDX Reusable Tag weight: 8 grams
- Packaged in 20, 25, 250 & 1,000



**FDX Reusable Standard  
Performance EID Tag,  
Extended Small Male**  
SKU: RFP-FDXOTP982-Y/GESMY

## FDX Reusable High Performance EID Tag

- FDX Technology
- ISO Compliant
- FDX Reusable Tag weight: 9 grams
- Packaged in 20, 25, 250 & 1,000

## EID Visual Matched Sets

- Sets are available in combinations of HDX or FDX EID tags paired with Maxi or Large Visual tags (other visual tag combinations available)
- All tags have corresponding Laser-Ink printed numbering
- Both tags feature the Tamperproof Ultra Cap™
- Tamperproof Maxi Tag size: 4" high x 3" wide
- Tamperproof Large Tag size: 3" high x 2 1/4" wide



**HDX-Maxi Matched Set 28**  
SKU: HDXOTP982/GTXF-COLOR-SET28



**HDX-Maxi Matched Set 17**  
SKU: HDXOTP982/GTXF-COLOR-SET17



**FDX-Maxi Matched Set 18**  
SKU: FDXOTP982/GTXF-COLOR-SET18

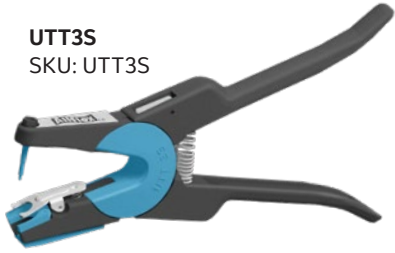


**HDX-Large Matched Set 3**  
SKU: HDXOTP982/GTLF-COLOR-SET3



Additional Custom Matched Sets are available. Visit [allflexusa.com](http://allflexusa.com) for more information.

**UTT3S**  
SKU: UTT3S



### UTT3S Total Tagger

- Completely re-engineered applicator for modern tagging systems and farm labor today
- Requires much less force to squeeze so you can safely tag animal after animal with less fatigue
- Lightweight and robust with one pin for nearly all applications, including Allflex two-piece tags, electronic tags and monitoring tags



**Universal Total Tagger**  
SKU: APP-UTT

### Universal Total Tagger

- The traditional standard for applying Allflex 2-Piece Global Tags
- Also use to apply Allflex Tamperproof and EID Tags and most major brands of Insecticide Tags
- Deep jaw makes proper placement easier
- Replacement applicator pin located in handle
- Black Clip Included

Remove Black Insert for EID Application



**Universal Total Tagger Black Insert**  
SKU: CLIP-UTT-K

### Universal Total Tagger Black Insert

- For use in Universal Total Tagger (Red)
- Use to apply Allflex Global and Tamperproof Tags



**Universal Total Tagger Pin (Red Blunt)**  
SKU: PIN-UTT

### Universal Total Tagger Pin (Red Blunt)

- For use in the Universal Total Tagger (Red)
- Use to apply Allflex Global, Tamperproof and EID Tags
- Can also be used with Global Retract-O-Matic™



**Universal Total Tagger Pin (Blue Blunt)**  
SKU: PIN-PT

### Universal Total Tagger Pin (Blue Blunt)

- For use in the UTT (Red) and UTT3S
- Use to apply Allflex Piglet Tags

### A-Tag™ One-Piece Applicators

- For use with A-Tag One-Piece Tags (Cow, Calf, and Feedlot V1 and V2)
- Deep jaw makes proper placement easier
- Grip is designed to ease hand fatigue from repeated use
- Replacement applicator pin located in handle



SKU: APP-ATAG

- Not for use with quick-insert application method on the A-Tag Feedlot V2



SKU: APP-ATAG-V2

- For use with A-Tag Feedlot V2
- Accommodates new quick-insert application method for A-Tag Feedlot V2

### A-Tag™ One-Piece Applicator Pin (Black Smooth)

- For use in the A-Tag™ One-Piece Applicator
- Use to apply A-Tag™ One-Piece Tag



**Allflex One-Piece Applicator Pin**  
SKU: PIN-ATAG



**Global Retract-O-Matic™**  
SKU: APP-RET-GLOBAL

### Global Retract-O-Matic™

- Retracts the pin out of the ear before the animal can react
- Automatic applicator
- Contoured pistol grip handle
- Excellent for tagging calves, sheep and goats
- Packaged complete with loaded red blunt pin and replacement pin
- Anvil can be positioned at any angle



**EID Ultra Retract-O-Matic™**  
SKU: APP-RET-ULTRA

### EID Ultra Retract-O-Matic™

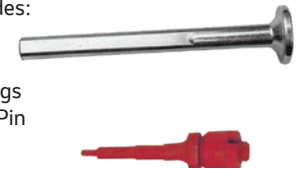
- Applies High Performance (HDX) and Standard Performance (FDX) EID tags
- Retracts the pin out of the ear before the animal can react
- Contoured pistol grip handle
- Anvil can be positioned at any angle
- Uses red blunt pin
- Automatic applicator

**Ultra Replacement Kit**  
SKU: EID-ANVIL-KIT  
**Ultra Anvil**  
SKU: APP-RET-HANV



### Ultra Retract-O-Matic™ Replacement Parts

- Kit Includes:
- Shaft
  - Base
  - 2 Springs
  - Nut & Pin



**Allflex Safety Ear Tag Removal Tool**  
SKU: KNIFE

### Allflex Safety Ear Tag Removal Tool

- Hook blade design slips easily between base of male tag and animal's ear
- Safety hook design makes tool safe for both livestock producer and animal

### Destron Fearing ROM Pin

With the new specialty DF ROM Pin (Anodized Yellow), Destron Fearing tag customers can utilize the Allflex™ Retract-O-Matic™, as well as the UTT3S, for applying both Destron Visual and Electronic (EID) tags. The Allflex ROMs, and UTT3S, will ship with the standard Allflex Pin. The DF ROM Pin is an accessory item that should be ordered separately to replace the standard Pin.



SKU: PIN-RET-DF



Destron Fearing™

Allflex added Destron Fearing™ to our product line in 2012 to diversify our business with a proven brand and product. Look for Destron Fearing products at your local animal health store, distributor, catalog, online retailer or veterinarian.

### Identify. Profit.

In 1945 Destron Fearing™ created the country's first commercially marketed visual identification tags for livestock. This is the foundation of today's animal identification solutions for producers worldwide.

Destron Fearing™ continues its tradition of leadership by manufacturing a range of innovative visual and electronic identification products, helping livestock producers reliably identify their animals and better manage their operations.

### Panel Tags

Rugged, light weight and available in a variety of fade-resistant colors. Destron Fearing™ panel tags are designed for superior retention, all weather performance and easy application when used with the ProGripl™ Universal Tag Applicator.

### Custom Tags

Custom marking is available including logos, lines of text and reverse side marking. Customized brands and images can be produced with a provided image.

### Premium Performance RFID

Our e.Tags® are designed to provide optimal read range and superior cold weather application. Each contains a passive, ISO-compliant (134.2 kHz) RFID transponder encoded with a 15-digit identification number that can be read in millisecond by any Destron Fearing™ or ISO-compliant reader.

### Dark & Durable Marking

Dark & Durable™ tag marking begins with the Destron Fearing laser mark that is etched into the tag surface using a computer guided laser beam resulting in a dark gray mark. The laser mark is then overlaid with black ink resulting in bold, black numbers.



Questions Call 1-800-328-0118 or  
Email [customerservice@destronfearing.com](mailto:customerservice@destronfearing.com)  
[www.destronfearing.com](http://www.destronfearing.com)



### Tag Accessories



Leg Bands

SKU: AC7003\*\*



Super Mark Pen™

SKU: AC7001



E-Z Knife™

SKU: AC7004



ProGripl™ Applicator

SKU: AC7006

\*\* = Leg Band Colors:

01 = Orange, 02 = Yellow, 05 = Red,  
06 = Blue, 07 = Green, 14 = Neon Orange,  
15 = Neon Yellow, 16 = Neon Green, 17 = Neon Pink

ProGripl™ replacement pin: SKU: AC7008

## Swine Identification Tags



**Hog Max®**  
2 1/8" x 1 1/2"  
Product Code: HMSET



**Hog Max²®**  
2 1/8" x 1 1/2"  
Product Code: HM2SET

- Hog Max is the industry leader for breeding age swine
- Center post stud design maximizes rate of retention
- Longer tapered tip for superior piercing ability
- Rectangular panel enhances readability and printing options for complex barcodes and logos
- Can accommodate multiple lines of custom printing and designs including barcodes and logos
- Hog Max² combines all the attributes of the Hog Max along with the addition of a square female



**Litter Max²™**  
1 1/4" x 1 1/4"  
Product Code: LM2SET

- Litter Max²™ is the industry leader for use in genetic management programs
- Designed specifically for piglets from birth to approximately 40 lbs
- Non-metal tip
- Square male and female design provide maximum retention from birth to harvest
- Square panel enhances readability and printing options for complex barcodes and logos
- Litter Max utilizes the same square male but will only have a round female



**Litter Max™**  
1 1/4" x 1 1/4"  
Product Code: LMSET



**Standard Round**  
1 1/8" Diameter  
Product Code: RHGSET

- Standard Round stud is most commonly used with feeder age pigs
- Universal size is designed for use in swine of any age
- Metal tip
- Round shape and fast taper tip provide superior piercing ability

### Available Colors and Codes

**Black = 08**  
Available in Standard Round only.



## Official USDA Swine Premises Tags



SKU: SWPTSET\*\*06D (Numbered Premises Tags)  
SKU: SWPTSET\*\*06L (Blank Premises Tags)  
\*\* = Color Code



- Purposes**
- Meets USDA and Pork Industry Standards
  - Improves Traceback Accuracy, Speed & Efficiency
  - Supports Comprehensive Disease Surveillance Programs

- Implementation**
- Tags Must Have Premises ID, Shield, and State
  - PIN of Last Farm Required
  - Tags Must be Applied Prior to Harvest Channel Entry
  - Cull Sows & Boars Required to have PIN Tag

## Electronic ID



**ESF80 - FDX Technology**  
Size: 1.2" Diameter  
\*Designed for ESF Stations  
Product Code: ESF80BTN02L

SKU: ESF80BTN02L = ESF80 RFID female only  
SKU: ESF80SET22 = ESF80 RFID and Round Hog male - Yellow  
SKU: HMESF80SET22 = ESF80 RFID and Hog Max male - Yellow



**e.Tag™ - FDX Technology**  
Size: 1.2" Diameter  
Product Code: ANESET  
Tag weight: 9.18 grams



**SW50 - FDX Technology**  
Size: 1.0" Diameter  
\*Designed for pigs (Wean-to-Finish age)  
Product Code: SW50SET

OMN: SW50BTN02L = RFID female only - Yellow  
OMN: SW50SET22 = SW50 RFID and Round Hog male - Yellow  
OMN: HMSW50SET22 = SW50 RFID and Hog Max male - Yellow

## Available Colors and Codes



\*Some colors are not available in all tag sizes. Please contact customer service for more information.  
Black = 08 - Available in Standard Round only.



**Extra Large Female**  
Size: 3" high x 4 5/8" wide  
SKU: XLSET

### Extra Large Female

- Used primarily for mature cattle
- Laser-ink management number standard
- Largest panel for management information
- Highly visible from both front and back
- Especially useful in cold climates for animals with longer hair
- Packaged with Global Small Male



**Large Female**  
Size: 2 1/4" high  
x 2 3/4" wide  
SKU: LGSET

### Large Female

- Used primarily for calves
- Laser-ink management number standard
- For use in beef and dairy cattle
- Packaged with Global Small Male



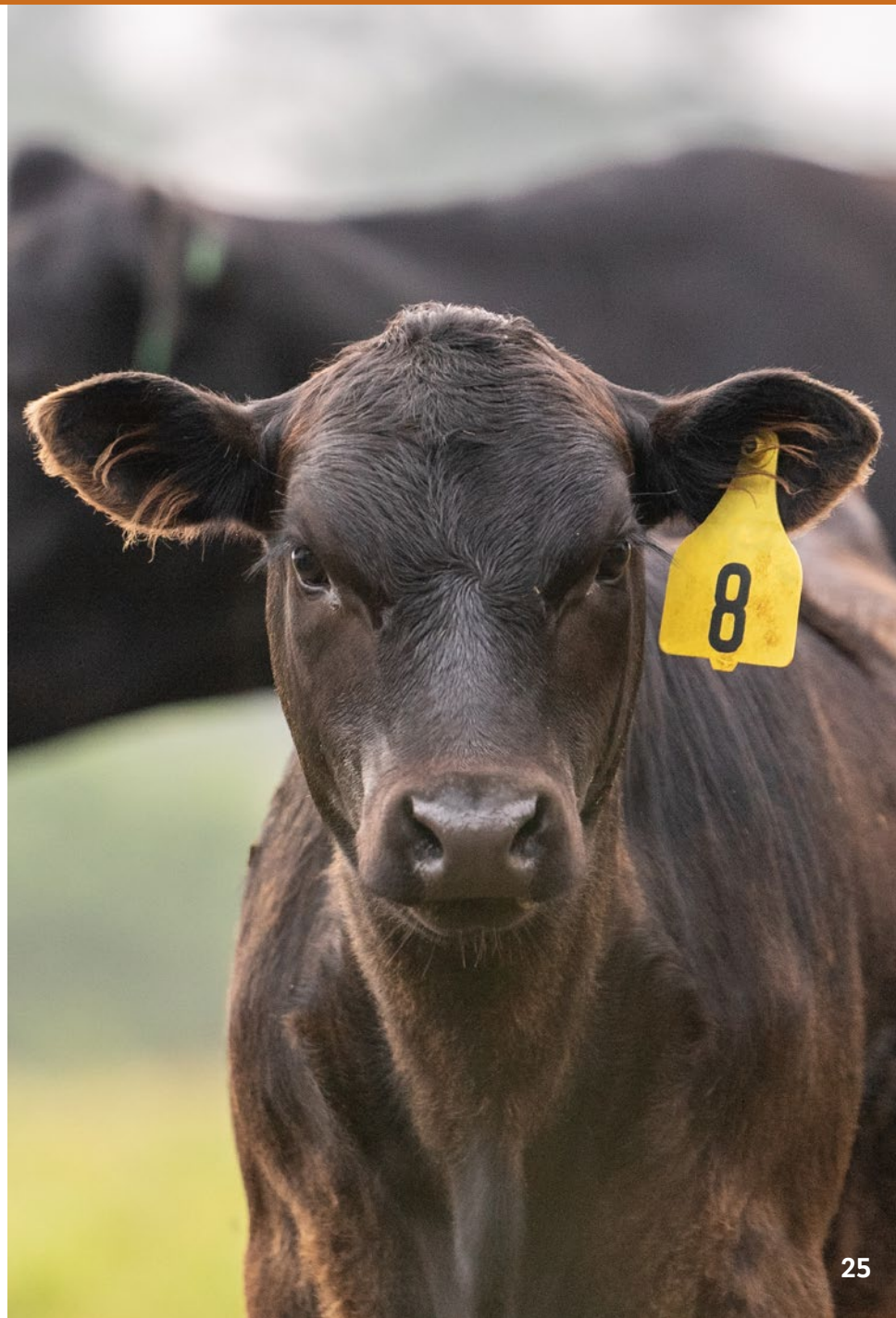
**e.Tag™ - FDX Technology**  
Size: 1.2" Diameter  
SKU: ANESET  
Tag weight: 9.18 grams



**Standard Round**  
Size: 1 1/8" Diameter  
SKU: RHGSET

### Standard Round

- Self-piercing tip
- Engineered for superior retention
- Numbered Global Small Male packaged standard with blank Global Small Female
- Also available with extended shaft for thicker ears
- Available blank in packages of 25 without female companion



## AWR300 Stick Reader

The AWR300 is the next generation EID Stick Reader and features 8GB of memory with a large backlit display.

The AWR boasts an ingress protection rating of IP67. It is lightweight, well balanced and comfortable in the hand.

### Key Features Include:

- Long read range (30cm or 12")
- Outstanding battery life, even at top power consumption, in continuous read mode, the LI-Ion Battery will last for around 12 hours
- 8GB Memory for up to 1 million records  
Record tag numbers with time stamp data and additional information
- The database function can display several items of data at once and add new information for an individual animal from defined lists including breeds or medicines
- Activities announced by multiple LED lights, plus a choice of sounds and vibration, to ensure you never miss an action
- Large backlit color display to clearly read IDs at scanning, even in dim light
- Lightweight, well-balanced with a robust construction and weatherproof IP67 standard
- Built in real time clock, displays Date and Time
- Connect to external devices using either WLAN, USB or Bluetooth connection

**AWR300  
STICK READER**  
SKU: AWR300



**RUGGED HARD-SIDED  
PLASTIC CASE**  
SKU: ATB300 (Case Only)  
Accessory Case Sold Separately



## LPR EID Reader

- Portable
- Cable Free
- Internal Bluetooth
- Rechargeable 7.2 VDC NiMH battery pack
- Shock Resistant Cover
- Safety Strap
- Lightweight
- ISO 11784 & 11785 Compliant
- SKU: LPR



SKU: LPR-COVER

## APR Series

Allflex APR Series devices are compact and easy to use rugged portable RFID scanning devices for reading livestock electronic identification (EID) tags. Providing full reader functionality, extensive EID read storage, and advanced management capabilities, these readers deliver exceptional functionality and value.

### APR Series Key Features Include

#### • Advanced Management

Support for individual animal management, with a large memory capacity of 1 million records. Data upload and download is easy, and data can be exported to management software or your preferred spreadsheet.

#### • Superior Connectivity

Unique WLAN connectivity (650 and 450 only), as well as Bluetooth and USB interfaces included as standard. Magnetic plug makes USB connection for transmission and battery charging simple and quick.

#### • Easy and Reliable

Fully integrated ISO11784/11875 RFID readers that are small, lightweight, and ergonomic. IP67 Casing for durability.



### APR650

- Powerful barcode engine
  - Both 1D and 2D barcodes
- Fast and reliable reading of EID tags and related barcodes, such as Tissue Sample Units
- SKU: APR650



**APR450**  
SKU: APR450



**APR250**  
SKU: APR250



## Reading Systems-Chuteside Applications

## Antenna System



### Fixed Feedlot Wand (FFW)

- Designed to scan animals during processing at chute
- Viewable lights indicate when the device is turned on and in operation
- Flexible, retractable connection with removable wand
- Comes complete with external power supply
- No internal tag storage, sends RFID numbers direct to scale indicator, computer or handheld device with suitable software.
- Compatible with most major scales and software
- Reads both FDX-B and HDX ISO 11784/11785 compliant EID products
- Built to withstand the harshest of conditions
- Also available with tag storage and “sync” capability in model Aleis-FFW8050

Allflex SKU: FFW6000



### 8152BT - Single Antenna System

- Designed for use in load-in/out alleyways or on a scale system
- The panel has an Auto-Tuning function
- Includes Removable Reader Box w/Bluetooth & 1200x600x21 or Antenna 900x450x21mm
- Comes with (2) built in 12VDC batteries housed just below the control box for remote usage
- Visual Screen and Keypad allow the user to view tag data and change reader settings as needed
- This unit will store up to 100,000 individual Electronic ID numbers and can be configured to compare EID numbers and send an alert when a specific number is scanned
- Reads both FDX-B and HDX ISO 11784/11785 compliant EID products
- Reader includes Battery Charger, Data Lead, USB Adapter and User’s Manual

Allflex SKU: 8152BT



### 9162BT - Single Antenna System

- Designed for use in load-in/out alleyways or on a scale system
- The panel has an Auto-tuning function
- Includes Removable Reader Box w/Bluetooth & 1200x600x21 or Antenna 900x450x21mm
- Comes with (2) built in 12VDC batteries housed just below the control box for remote usage
- Visual screen and QWERTY keypad allow the user to view tag data, input data in up to four configurable fields and change reader settings as needed
- This unit will store up to 100,000 individual Electronic ID numbers and can be configured to Compare EID numbers and send an alert when a specific number is scanned.
- Reads both FDX-B and HDX ISO 11784/11785 compliant EID products
- Reader includes Battery Charger, Data lead, USB Adapter and User’s Manual

Allflex SKU: 9162BT

### Neck Bars



- Designed to read cattle in chute
- Consists of two antennas mounted on the front of the chute
- Designed to read in the “HELD” position
- Includes a back-up wand for improper positioned animals
- Storage of up to 100,000 RFID numbers
- Comes complete with external power supply
- Sends RFID numbers direct to scale indicator, computer or PDA
- Compatible with most major scales and software
- Reads both FDX-B and HDX ISO 11784/11785 compliant EID products
- Designed specifically to handle chute reading conditions

Allflex SKU: FFWNB9060

### Dual Panel Antenna Systems



- Designed for “High Volume” load-in and load-out of animals
- Two antennas, 1200x600x21mm or 900x450x21mm
- External power supply required, not included
- Sends RFID numbers direct to scale indicator, computer, handheld device or sent to remote data storage box
- Compatible with most major scales and software
- Reads both FDX-B and HDX ISO 11784/11785 compliant products

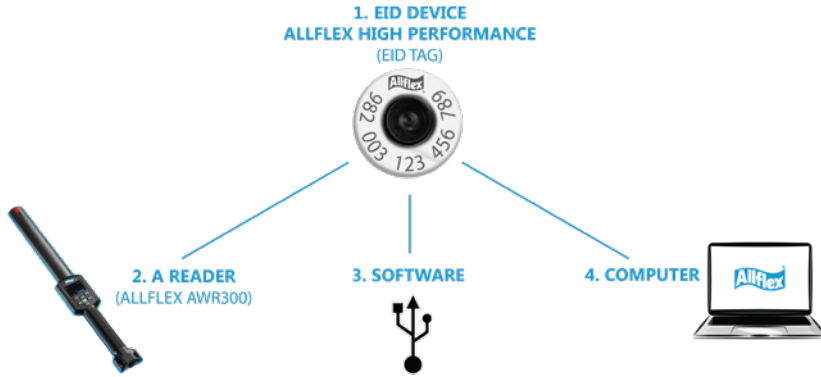
Allflex SKU: 610 Multi A&B

**“FAST, ACCURATE AND EFFICIENT”**

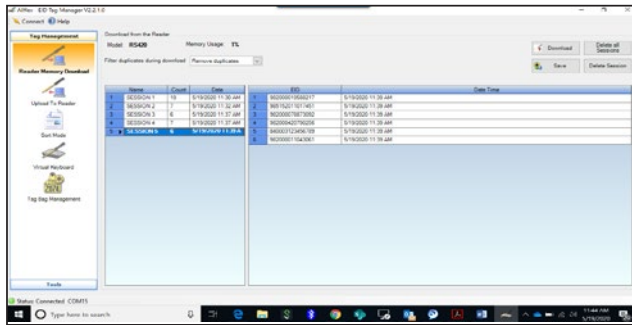
All panel antennas require a site survey from our sales staff or technical department and are installed by our technical team.



The Allflex EID Tag is a crucial part of an electronic identification system. As such, the tag is simply the first of four elements needed for complete data collection and management. Data collection systems are varied and constantly evolving. They typically include:

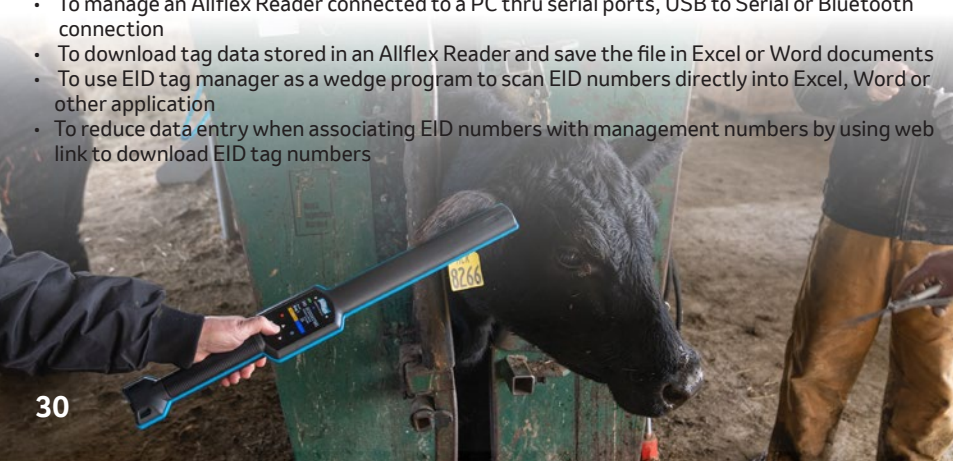


EID Tag Manager software can be downloaded for FREE from our website at [allflexusa.com](http://allflexusa.com)



Allflex EID Tag Manager Software allows the Allflex Reader user to manage basic reader functions and download EID tags

- To manage an Allflex Reader connected to a PC thru serial ports, USB to Serial or Bluetooth connection
- To download tag data stored in an Allflex Reader and save the file in Excel or Word documents
- To use EID tag manager as a wedge program to scan EID numbers directly into Excel, Word or other application
- To reduce data entry when associating EID numbers with management numbers by using web link to download EID tag numbers



## Streamline Livestock Information Collection With Allflex® CONNECT



### Free smartphone app links your EID reader to the office

Allflex CONNECT makes it easy to send information to your office. Seamlessly. Privately. Accurately.

- Gather and send data to your office computer
- Link health, genetics and breeding records to EID
- Eliminate manual recording errors
- Control access to your information



#### Allflex CONNECT

Free and Available for IOS or Android





## Allflex - Tissue Sampling Technology

Collecting tissue samples has never been more efficient and cost effective. Scientific advancements in the mapping of livestock genomes along with continued development of affordable analytics has changed the sampling industry - making it easier and quicker for producers to use DNA for:

- Parentage verification
- Genetic selection
- BVD diagnostics

Fast, high performance sample collection ... Samples can be collected in seconds with minimal animal restraint. A single-squeeze motion collects a sample with minimum distress to the animal.

Clean, uncontaminated sampling ... The genetic material is sealed in a specially designed preservative.

Visual, DNA-sample identification ... Instant confirmation of on-farm sampling success. No more guessing whether enough genetic material has been gathered.

Minimize retesting ... Tissue samples contain a large quantity of high quality DNA for genetic analysis yielding excellent lab results.



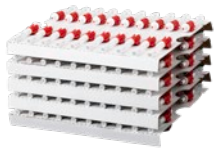
**Tissue Sampling Applicator**  
SKU: APP-TSU



**TSU Tray**  
SKU: TSU-TRAY-B



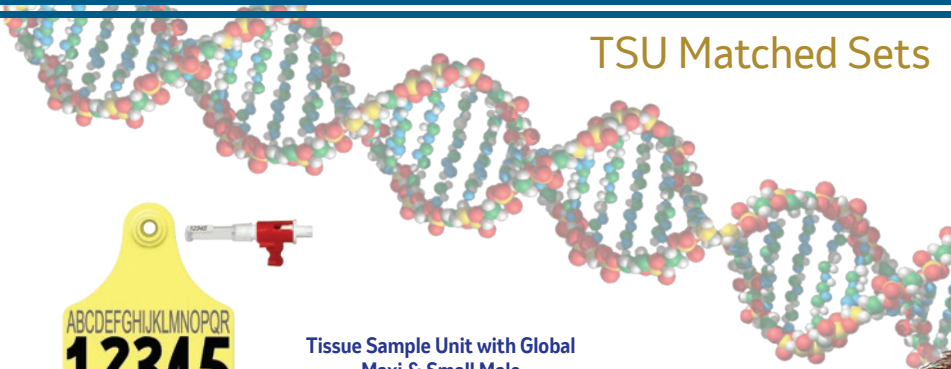
**TSU Tray + Lid**  
SKU: TSU-TRAY+LID



**Tissue Sampling Unit-Box of 100**  
SKU: AF-TSU-100



**Tissue Sampling Unit-Box of 10**  
SKU: AF-TSU-10



**Tissue Sample Unit with Global Maxi & Small Male**  
SKU: TSU-GXF58/GSM-COLOR-SS



**Tissue Sample Unit with HDX Tamperproof Maxi Matched Set**  
SKU: TSU-HDX-840/GTXF-COLOR-SET22



**Tissue Sampling Unit with HDX Tamperproof Maxi & Large Male Matched Set**  
SKU: TSU-HDX840/GTXF1-GLM1-COLOR

**Tissue Sample Unit with HDX ATag™ Cow Matched Set**  
SKU: TSU-HDX840/ATAGX-COLOR-SET17



More options available  
Visit [allflexusa.com](http://allflexusa.com)

## Making ID Easy Allflex Matched Sets

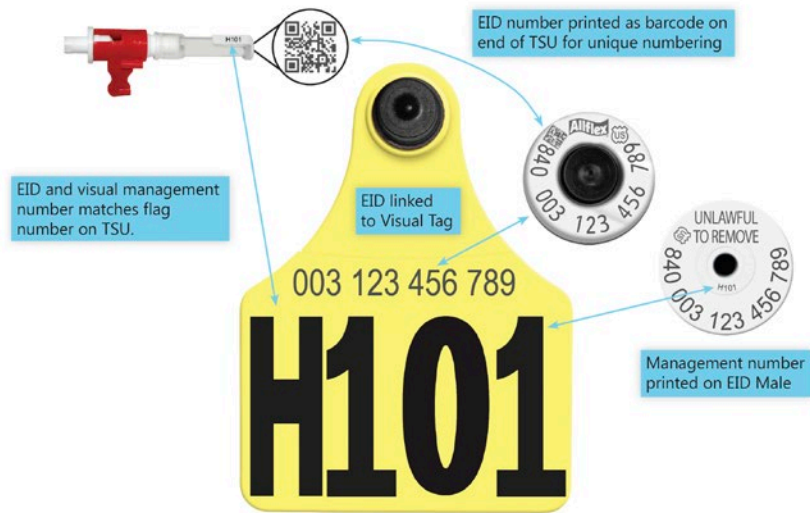
Producers continue to use our visual tags, electronic tags and Tissue Sampling Units in combination.

We've developed some efficiencies in the numbering of these sets, in order to eliminate the need to "match" these devices at a later date.

Just apply the entire ID set to your animal and the management number, EID number and TSU are permanently connected for ease of record keeping. Download the file from our website to save or share the information with your herd management program, breed association or genomics lab.

Management numbers can be in sequence or totally custom to better match your herd needs.

Use for calves, replacement females, bull sale tags or whatever your need!



**We help you bring it all together.**

For Tag Lookup visit: <https://flexlink.allflexusa.com/Search/Atlas?reportID=1>

## Allflex 2-in-1 Marking Pens

- One pen with two marking tips (fine and broad)
- Easy-to-hold and easy-to-use pump action
- Fade resistant black or white ink
- Specially formulated for use on Allflex Ear Tags



Allflex 2-in-1 Marking Pens  
SKU: PEN



SKU: PEN-WHITE

### TIPS FOR MARKING

1

Wipe tag surface clean with isopropyl (rubbing) alcohol.

2

Mark tag indoors in a well ventilated area at room temperature. Keep the internal valve partially open by applying slight, constant pressure on the tip.

3

Write numbers and letters slowly for heavy inking and durable marking. Insufficient ink will cause the markings to fade prematurely.

4

Mark at least two times, allowing for proper drying between markings for best results.

5

If possible, dry tags in a warm, sunny area as this enhances ink penetration. Allow mark to dry thoroughly before tagging animal.

## Patented Laser-Ink Marking

- Laser-ink marking allows for greater visibility of management numbers in livestock applications
- The patented marking process is exclusive to Allflex
- The durable laser mark is guaranteed to last the life of the animal





## Repeater Syringes



### 50MR2

- Accurately delivers selected dose
- Easy grip for high volume use
- Barrel and needle attachment are fully autoclavable
- Streamlined design with fewer replacement parts
- Amber-colored barrel reduces UV sunlight exposure
- Color Knob Pack available to differentiate between medications

### 50MR2

(Adjustable dosage from 1ml to 5ml)

SKU: 50MR2



### 25MR2

- Accurately delivers selected dose
- Easy grip for high volume use
- Barrel and needle attachment are fully autoclavable
- Streamlined design with fewer replacement parts
- Amber-colored barrel reduces UV sunlight exposure
- Color Knob Pack available to differentiate between medications

### 25MR2

(Adjustable dosage from .5ml to 2.5ml)

SKU: 25MR2



### LONG RANGE BARREL

The LR Barrel is designed for use with extended release deworming products that require a specialized plastic barrel.

SKU: LR-BARREL



### SGNOZZLE/BARREL

Sheep & Goat Drench Barrel

SKU: 50MR SG NOZZLE/BARREL



### LONG RANGE BARREL

The LR Barrel is designed for use with extended release deworming products that require a specialized plastic barrel.

SKU: LR-BARREL

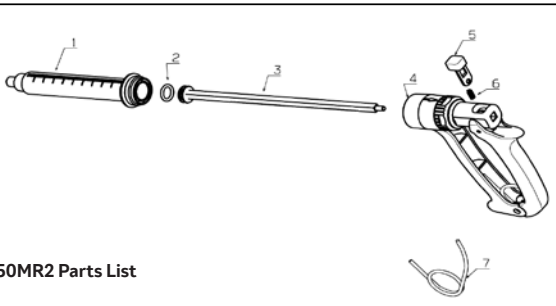
## ACCESSORIES

### Color Code Injection Accuracy System

Interchangeable colored knobs let you dedicate a particular syringe to a selected vaccine or therapeutic compound to ensure proper administration and avoid mistakes.

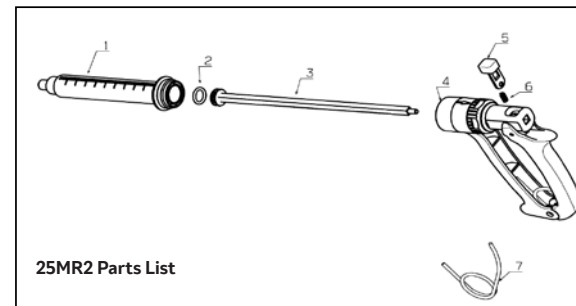


(MUST BE ORDERED SEPARATELY)



50MR2 Parts List

SKU	Item	Description
50MR2-PO	2	Piston O-Ring 50 ML
50MR2-B	1	Plastic Barrel 50 ML LL
50MR2-B/PO		Barrel & Piston O-Ring
50MR2-RH		Replacement Handle
50MR2-PR/R	3	Piston+Piston Rod 50 ML
50MR2-RH	4	Handle 50 ML CPL
MR2-LS	5	Locking Sleeve CPL
MR2-LSSP	6	Spring for Locking Sleeve
MR2-HS	7	Handle Spring
MR2-KNOB-K	8	Knob Black
MR2-KNOB-B	8	Knob Blue
MR2-KNOB-R	8	Knob Red
MR2-KNOB-Y	8	Knob Yellow
MR2-KNOB-PACK	8	Knob Pack



25MR2 Parts List

SKU	Item	Description
25MR2-PO	2	Piston O-Ring 25 ML
25MR2-B	1	Plastic Barrel 25 ML
25MR2-B/PO		Barrel & Piston O-Ring
25MR2-RH		Replacement Handle
25MR2-PR/R	3	Piston+Piston Rod 25 ML
25MR2-RH	4	Handle 25 ML CPL
MR2-LS	5	Locking Sleeve CPL
MR2-LSSP	6	Spring for Locking Sleeve
MR2-HS	7	Handle Spring
MR2-KNOB-K	8	Knob Black
MR2-KNOB-B	8	Knob Blue
MR2-KNOB-R	8	Knob Red
MR2-KNOB-Y	8	Knob Yellow
MR2-KNOB-PACK	8	Knob Pack

## EM Syringes



### 2EM & 5EM Tube Fed Syringes

- Accurately delivers selected dose
- Easy V-grip for high volume use
- Metal Luer Lock Tip
- Removable barrel for cleaning
- Durable plastic design
- Amber-colored barrel and tubing reduce UV sunlight exposure

**2EM**  
(Adjustable dosage from .25ML to 2ML)  
SKU: 2EM

**5EM**  
(Adjustable dosage from .5ML to 5ML)  
SKU: 5EM

**LD.3EM-BT**  
(Adjustable dosage from .1ML to .3ML)  
SKU: LD.3EM-BT



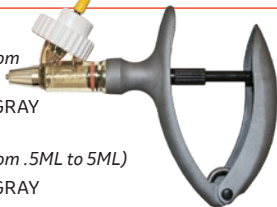
### LD.3EM, 2EM & 5EM Bottle Fed Syringes

- Automatic self-filling with bottle attachment
- Heavy-Duty Bottle Cage for bottle protection (50ML & 100ML bottles only)
- Accurately delivers selected dose
- Easy V-grip for high volume use
- Metal Luer Lock Tip
- Removable barrel for cleaning
- Durable plastic design
- Amber-colored barrel reduces UV sunlight exposure
- Plastic Atomizer Nozzle - SKU: 8300042687

**2EM-BT**  
(Adjustable dosage from .25ML to 2ML)  
SKU: 2EM-BT

**5EM-BT**  
(Adjustable dosage from .5ML to 5ML)  
SKU: 5EM-BT

**2EM-BT-UBA**  
(Adjustable dosage from .25ML to 2ML)  
SKU: 2EM-BT-UBA-GRAY



### 2EM & 5EM Bottle Fed Syringe with Universal Bottle Adapter

- Automatic self-filling with Universal Bottle Adapters
- Five color coded "Universal Bottle Adapters" included
- Universal Bottle Adapters enable multi-size bottles to fit on the syringe
- Metal Luer Lock Tip
- Removable barrel for cleaning
- Durable plastic design
- Amber-colored barrel reduce UV sunlight exposure

**5EM-BT-UBA**  
(Adjustable dosage from .5ML to 5ML)  
SKU: 5EM-BT-UBA-GRAY

#### Universal Bottle Adapters



**Measurements:**  
Blue: 250ml / 30mm  
Black: Specialized 250/500ml / 34mm  
White: 50ml / 100ml / 20mm  
Red: 250ml / 30.5mm

SKU	Description	SKU	Description
2EM	2ML AUTOMATIC REUSABLE SYRINGE	5EM	5ML AUTOMATIC REUSABLE SYRINGE
2EM-B	2ML AUTOMATIC REUSABLE SYRINGE w/30MM	5EM-B	5ML AUTOMATIC REUSABLE SYRINGE w/30MM DRAW
DRAW		5EM-S	5ML AUTOMATIC REUSABLE SYRINGE w/PLASTIC SPIKE
2EM-S	2ML AUTOMATIC REUSABLE SYRINGE w/PLASTIC SPIKE	EM1ORING	PISTON O-RING 1 ML
EM.3ORING	PISTON O-RING 0.3 ML	EM2ORING	PISTON O-RING 2 ML
EM.5ORING	PISTON O-RING 0.5 M	EM5ORING	PISTON O-RING 5 ML

## UM Syringes



**1UM-T**  
(Adjustable dosage from .1ML to 1ML)  
SKU: 1UM-T

**2UM-T**  
(Adjustable dosage from .1ML to 2ML)  
SKU: 2UM-T

### 2UM Tube Fed Syringe

- Automatic self-filling tube feed
- Adaptable to bottle feed
- Accurately delivers selected dose
- Ergonomic grip for comfort
- Steel Plunger (no O-ring) with precision glass barrel
- Adjustable pin-lock handle design

### 2UM Bottle Fed Syringes

- Heavy-Duty Bottle Cage for bottle protection (50ML or 100ML bottles only)
- Adaptable to tube feed
- Accurately delivers selected dose
- Easy grip for high volume use
- Steel Plunger (no O-ring) with precision glass barrel
- Adjustable pin-lock handle design



**2UM**  
(Adjustable dosage from .1ML to 2ML)  
SKU: 2UM

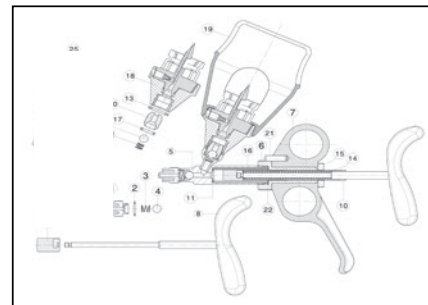
**5UM-BT/T**  
(Adjustable dosage from .5ML to 5ML)  
SKU: 5UM-BT/T



### 5UM-BT/T Automatic Syringe

- 5ML automatic self-filling syringe
- Adaptable as a tube feed syringe or bottle top syringe
- Steel Plunger (no O-ring) with precision glass barrel
- Adjustable pin-lock handle design for easy conversion
- Heavy-Duty Bottle Cage for bottle protection (50ML & 100ML bottles only)

SKU	Item	Description		
1UM-B	2UM-B	5UM-B	Item	Description
1UM-MSK	2UM-MSK	5UM-MSK	1	Glass Barrel 1ML/2ML/5ML
1UM-SK	2UM-SK	5UM-SK	2	Major Service Kit
		5UM-BT	3	Minor Service Kit
		5UM/T-3		
XP14	XP14	XP14	1	Nozzle Luer-Lock
XP01	XP01	XP01	2	Washer
XP02	XP02	XP02	3	Compressing Spring
XP03	XP03	XP03	4	Metal Ball
1UM04	2UM04	5UM04	5	Barrel Sleeve
XP04	XP04	XP04	6	Sleeve
XP05	XP05	XP05	7	Handle Black
XP06	XP06	XP06	8	Piston Rod w. Handle
1UM08	2UM08	5UM08	9	Piston
XP10	XP10	XP10	10	Adjusting Sleeve
1UM10	2UM10	5UM10	11	Washer
XP08	XP08	XP08	12	Compressing Spring
XP09	XP09	XP09	13	Washer
XP11	XP11	XP11	14	Compressing Ring
XP12	XP12	XP12	15	Knurled Screw
1UM-B	2UM-B	5UM-B	16	Glass Barrel 1ML
XP13	XP13	XP13	17	Washer
XP-BATT	XP-BATT	XP-BATT	18	Bottle Attachment w/o Basket
XP-CAGE	XP-CAGE	XP-CAGE	19	Basket
XP17	XP17	XP17	20	Valve Screw
XP16	XP16	XP16	21	Pin
1UM11	2UM11	5UM11	22	Washer

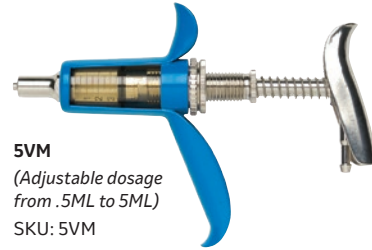


## Draw-Off Syringes



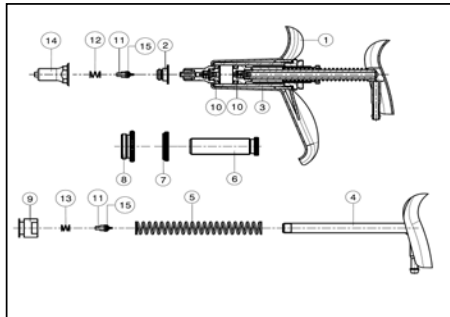
### 5VM Draw-Off Injection Syringe

- Automatic self-filling tube feed
- Accurately delivers selected dose
- Easy grip for high volume use
- Piston and O-ring Plunger
- Amber-colored barrel and tubing reduce UV sunlight exposure



**5VM**  
(Adjustable dosage from .5ML to 5ML)  
SKU: 5VM

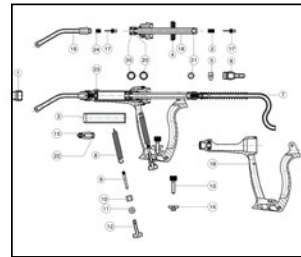
SKU	Item	Description
5VM		5ML Automatic Syringe Tube Feed
5VM-A		5ML Automatic Syringe Tube Feed/20MM Draw Off
5VM-B		5ML Automatic Syringe Tube Feed/30MM Draw Off
XP20	1	Barrel Housing
5VM02	2	Mounting Hub
XP21	3	Plastic Barrel 5 CC
5VM03	4	Piston Rod
XP21-SPRING	5	Compression Spring
XP22	6	Dose Rod
XP23	7	Locking Nut
XP24	8	Barrel Lock Nut
5VM08	9	Piston
XP25	10	O-ring
XP26	11	Valve with Washer
XP02	12	Valve Spring
XP08	13	Valve Spring
5VM13	14	Front Luer Lock
XP27	22	Washer
AT18	24	PVC Amber Tube
5VM-SK	10(2ea),11(2ea),12,13	Minor Service Kit
5VM-MSK	3,10(2ea),11(2ea),12,13	Major Service Kit



**10VM**  
(Adjustable dosage from .5ML to 10ML)  
SKU: 10VM-S



**20VM**  
(Adjustable dosage from 1ML to 20ML)  
SKU: 20VM-S



### Drench Nozzles

5 1/2" Drench Nozzle for 10VM/20VM  
SKU: **D-NOZ**

3" Drench Nozzle for 10VM/20VM  
SKU: **S-NOZ**

### 10VM & 20VM Draw-Off Injection Syringes

- Automatic self-filling tube feed
- Designed to be used as an injector or drencher
- Accurately delivers selected dose
- Easy V-grip for high volume use
- Easy to adjust handle tension for improved performance
- Durable metal and plastic design
- Double O-ring Piston
- Easy-to-clean external valves and removable piston shaft
- Amber-colored barrel and tubing reduce UV sunlight exposure

SKU	Item	Description	
10VM-S	20VM-S	10ML & 20ML Automatic Syringe	
10VM-S-A	20VM-S-A	10ML & 20ML Automatic Syringe/20MM Draw Off	
10VM-S-B	20VM-S-B	10ML & 20ML Automatic Syringe/30MM Draw Off	
10VM-SD	20VM-SD	10ML & 20ML Automatic Syringe/Drencher	
10VM-ORING	20VM-ORING	20	18 Piston O-ring (20ML)
10VM-HAN	20VM-HAN	19	Complete Handle Assembly
10VM-BAR	20VM-BAR	3	Amber Plastic Barrel
LLTIP	LLTIP	15	Luer Lock Nozzle
XP36	XP36	1	Nozzle Nut
XP37	XP37	5 & 17	Valve with O-ring
XP38	XP38	2 & 24	Valve Spring
10VM-ROD	20VM-ROD	18	7 Piston Rod 20ML
XP39	XP39	4	Retaining Nut
XP40	XP40	6	Tubing Attachment
AT-10VM	AT-20VM	7	PVC Tube length 1,7 m
XP41	XP41	8	Draw Spring
XP42	XP42	9	Spring Rod
XP43	XP43	14	Dosage Lock Nut
XP44	XP44	13	Dosage Screw
XP45	XP45	10	Tension Bushing
XP46	XP46	11	Tension Washer
XP47	XP47	12	Tension Screw
XP48	XP48	17	Lever Wear Pads (One-piece)
XP49	XP49	21	O-ring (Rear Valve Housing)
XP50	XP50	22	O-ring LL+Drench Nozzle
XP13	XP13	20	O-ring (Luer Lock Nozzle and Drench Nozzle)
10VM01	20VM01	23	O-ring (Barrel Mounting Hub)
10VM-SK	20VM-SK	5(2ea),6(2ea),17,18(2ea),19,20(2ea),21	Minor Service Kit Includes: Washer, Valve Spring, Ball (2ea.), Washer, Valve Spring Washer, O-ring, Washer (Red)
10VM-MSK	20VM-MSK	2,5(2ea),6(2ea),17,18(2ea),19,20(2ea),21	Major Service Kit Includes: Washer, Valve Spring, Ball (2 ea.), Washer, Valve Spring, Washer, Washer, Glass Barrel (2ml), O-ring, Washer (Red)
BACK 25	BACK 25		2.5 Liter Back Pack
BACK 5L	BACK 5L		5 Liter Back Pack
D-NOZ	D-NOZ		5 1/2" Drench Nozzle
S-NOZ	S-NOZ	16	3" Drench Nozzle

## Allflex HSW EM Fixed Dose Syringes

- Automatic self-filling syringe for injection
- Fixed Dose .5ML (Gray), 1ML (Red) and 2ML (Black)

Syringes are fixed at the specific dosage for each model, for accuracy in dispensing medications and vaccines. The dosage cannot be changed or adjusted with these models. These syringes have an accuracy guarantee of + -2% to dispense the set dosage.

### .5ML EM Fixed Dose UBA (Universal Bottle Adapter)

White (20MM) and Blue (30MM) Bottle Collar  
SKU: .5EM-BT-UBA-FD (Color = Gray)

### 1ML EM Fixed Dose UBA (Universal Bottle Adapter)

White (20MM) and Blue (30MM) Bottle Collar  
SKU: 1EM-BT-UBA-FD (Color = Red)

### 1ML EM Traditional Tubing

White (20MM) and Blue (30MM) Draw-Off Caps, Hose 1.8 meter (clear)  
SKU: 1EM-FD (Color = Red)

### 2ML EM Traditional Tubing

White (20MM) and Blue (30MM) Draw-Off Caps. Hose 1.8 meter (clear)  
SKU: 2EM-FD (Color = Black)

*Syringes available individually or in cases of 25*



## Multi-Purpose Dosing Instruments

### 12.5ML, 30ML, 70ML Luer Tip Injector, 5.5" Drencher Nozzle, Pour On Tip

- Automatic self-filling syringe
- Easy set dial-a-dosage with easy view dosage window
- Tips included for Injector, Drencher and Pour On applications
- Removable barrel for cleaning
- Replaceable front valve and spring with lock-in-place feature
- Durable plastic design
- Easy V-grip for high volume use
- Amber colored barrel reduce UV sun light exposure

### 12.5EM-SDP

(Adjustable dosage from .5ML to 12.5ML)  
SKU: 12.5EM-SDP



### 30EM-SDP

(Adjustable dosage from 5ML to 30ML)  
SKU: 30EM-SDP



### 70EM-SDP

(Adjustable dosage from 7.5ML to 70ML)  
SKU: 70EM-SDP



## Nozzles



**Drench Nozzle**

5 1/2" Drench Nozzle for 10VM/20VM  
SKU: D-NOZ  
3" Drench Nozzle for 10VM/20VM  
SKU: S-NOZ



**Pour On Nozzle**



**Injector Tip**

## DF Masterline™ Syringe

### Roux Revolver 50ML Syringe

- Proven Pistol Grip Design
- Durable Metal construction with a glass barrel
- High quality for long service life



SKU: 50ROUX-DF



## HSW ECO-MATIC® TWIN



### The Market's First Lightweight, Ergonomic Compact Double Barrel Plastic Syringe

- Simultaneous vaccination of two products independently
- Premium quality plastic syringe with durable plastic barrels
- Reusable - The only plastic syringe that can be boiled
- Ergonomic, lightweight design for comfort and ease of use
- Bottle mount and/or tubing connection
- Adjustable barrel orientation for comfort and different bottle sizes



- Unique Patent Pending Needle Nut Swivel Design
- Needle distance can be adapted to the age, size and species of the animal*  
**Seven different distances:**  
 20MM - 21.1MM - 22MM - 28MM - 32MM - 34.9MM - 36MM
- Four Fixed Dose Barrel combinations available:

Allflex SKU	Allflex Description
1/1 EM-TWIN	1/1 EM TWIN Syringe With Accessory Pack
2/2 EM- TWIN	2/2 EM TWIN Syringe With Accessory Pack
1/2 EM-TWIN	1/2 EM TWIN Syringe With Accessory Pack
.5/2 EM-TWIN	.5/2 EM TWIN with Accessory Pack

SKU	Description
Twin-B-L-EM.5ML	Twin Barrel Left 0.5ML Universal
Twin-B-L-EM1ML	Twin Barrel Left 1ML Universal
Twin-B-L-EM2ML	Twin Barrel Left 2ML Universal
Twin-B-R-EM.5ML	Twin Barrel Right 0.5ML Universal
Twin-B-R-EM1ML	Twin Barrel Right 1ML Universal
Twin-B-R-EM2ML	Twin Barrel Right 2ML Universal
EM.5ORING	Piston O-ring 0.5ML
EM1ORING	Piston O-ring 1ML
EM2ORING	Piston O-ring 2ML
TWIN FRONT WASHER	Front Sealing Washer Stepped
TWIN FRONT LUER LOCK	Front Part II Hexagonal
TWIN SWIVEL NUT	Twin Swivel Nut

- Package Includes:**
- Two Universal Bottle Collars (20mm & 30mm)
  - Two Universal Spigot Draw-off Collars (4-6mm)
  - Two soft PVC tubing



## Drenchers



- 10VM Drencher**  
 (Adjustable dosage from .5ML to 10ML)  
 SKU: 10VM-D
- 20VM Drencher**  
 (Adjustable dosage from 1ML to 20ML)  
 SKU: 20VM-D

### 10VM & 20VM Drenchers

- Automatic self-filling tube feed
- Designed to be used as an injector or drencher
- Accurately delivers selected dose
- Easy V-grip for high volume use
- Easy-to-adjust handle tension for improved performance
- Durable metal and plastic design
- Double O-ring Piston
- Easy-to-clean external valves and removable piston shaft
- Amber-colored barrel and tubing reduce UV sunlight exposure

### 70ML & 200ML Drenchers

- 70ml Drencher**  
 (Adjustable dosage from 10ML to 70ML)  
 SKU: UKAL-70ML
- 200ml Drencher**  
 (Adjustable dosage from 10ML to 200ML)  
 SKU: UKAL-200ML

- Durable barrel with metal push rod and piston
- Dosage calibrations controlled by distal screw
- Easy-to-use grip



- 10ML Nylon Syringe**  
 (Adjustable dosage from 1ML to 10ML)  
 SKU: TU MASTERLINE-10ML

- 20ML Nylon Syringe**  
 (Adjustable dosage from 1ML to 20ML)  
 SKU: TU MASTERLINE-20ML

- 50ML Nylon Syringe**  
 (Adjustable dosage from 5ML to 50ML)  
 SKU: TU MASTERLINE-50ML

### 10ML, 20ML & 50ML Nylon Syringes

- Durable clear Nylon construction with comfort handle
- Metal Luer Lock Tip and Plunger Shaft
- Visible barrel scale with dosage increments
- Fully boilable for disinfection
- Individually packaged including spare O-ring parts
- Available in 10ML, 20ML and 50ML

SKU	Description
TU FLEX-MASTER A 10 ML LL	TU MASTERLINE 10ML SYRINGE
TU FLEX-MASTER A 20 ML LL	TU MASTERLINE 20ML SYRINGE
TU FLEX-MASTER A 50 ML LL	TU MASTERLINE 50ML SYRINGE
TU FLEX-MASTER B 10 ML LL	TU MASTERLINE/DOSAGE LOCK 10ML SYRINGE
TU FLEX-MASTER B 20 ML LL	TU MASTERLINE/DOSAGE LOCK 20ML SYRINGE
TU FLEX-MASTER B 50 ML LL	TU MASTERLINE/DOSAGE LOCK 50ML SYRINGE



## SG-Nozzle

SG-Nozzle threads into the Luer Lock Syringe to make a syringe into a drencher for sheep and goats

SKU: SG-NOZZLE



## Back Pack

2.5 Liter Back Pack: SKU: BACK25  
5 Liter Back Pack: SKU: BACK5L

Back Pack comes with straps



## Replacement Back Pack Cap

SKU: BACK-CAP



## Draw-Off Color Coded Caps

20MM (white): SKU: HD20W  
30MM (blue): SKU: HD30B



## Extension Syringe

- Allows for increased distance to breeding animals and enhances user safety
- Long lasting strong and durable carbon-metal design
- Heavy metal luer needle lock
- Ergonomic and lightweight
- Optimized for use with Allflex Syringe Line



SKU: SYR-EXT29CM

## Injection Bar for Swine

- Allows for increased distance to breeding animals and enhances user safety
- Reduce user exposure to crates and gating
- Time saving for mass vaccinations
- Long lasting strong and durable carbon-metal design
- Heavy metal luer needle lock
- Kink protection for tubing
- Ergonomic and lightweight
- Optimized for use with Allflex Syringe Line



SKU: SE17

## Bottle Holders

- Constructed of premium quality Neoprene
- Hanging/Belt and Arm models available
- Designed to fit and protect medicine and vaccine bottles
- Prevents or reduces vaccine temperature fluctuations
- Protects glass bottle from outside impact
- Shields vaccine from harmful UV lights
- Easy and comfortable use
- Built in needle holders from convenience
- Three sizes available: Small, Medium and Large



SKU's: HSW-BH-ARM SMALL HSW-BH-BELT SMALL  
HSW-BH-ARM MEDIUM HSW-BH-BELT MEDIUM  
HSW-BH-ARM LARGE HSW-BH-BELT LARGE

## CleanVax™

### Clean, fast and convenient vaccinations with CleanVax nozzles and shields

CleanVax nozzles are designed to be minimally invasive, providing a more comfortable vaccination experience for calves. This also improves ease of administration, making the experience quick and easy for both you and your calves. The disposable shields provide a hygienic vaccination for every calf.

### CleanVax Nozzles

Sold in packs of 10  
SKU: CLEANVAX-NOZZLE



### CleanVax Shields

Sold in packs of 25  
SKU: CLEANVAX-SHIELDS



## PRIMING A SYRINGE

Priming the syringe eliminates air from the system, assuring the proper dose is administered.

- 1 Position the dosage indicator to approximately half the capacity of the cylinder.
- 2 Pump the handle until the medication is expelled from the needle or nozzle in an unbroken stream. To avoid loss of medication during priming, insert sterile needle or nozzle into the neck of the container.

## SYRINGE CLEANING & MAINTENANCE

Proper care can extend the life of your Allflex Syringe. After use, or when switching medications, the cylinder and feed tube should be thoroughly cleaned.

- 1 Add 4-5 CC of detergent to one quart of hot water. Note: When using modified live virus vaccines, use caution selecting detergent. Avoid antibacterial/disinfectant soap as it may harm the vaccine.
- 2 Set the dosage system on maximum and briskly pump the hot detergent solution through the medication reservoir, feed tube and instrument.
- 3 Rinse by pumping clean water through the reservoir, feed tube and instrument until water is expelled.
- 4 Pump dry and remove the tubing.
- 5 To maintain the O-rings and valves, periodically lubricate the syringe with a small amount of castor oil or vegetable oil. Note: Do not use mineral oil, silicone, WD40, glycerin or alcohol. Petroleum-based products harden the rubber rings and valves, reducing the life of the components.

## USING A TUBE FED SYRINGE

To attach a medication reservoir:

- 1 Attach one end of the amber tube to the syringe/drencher
- 2 Option 1: Attach the other end of the amber tube to the selected draw-off cap
- 3 Option 2: Attach the other end of the amber tube to the 2.5 liter back pack
- 4 Loosen dose adjustment lock nut
- 5 Turn dosing adjustment screw to set the required dosage. Retighten lock nut
- 6 Handle spring pressure can be adjusted for comfort and tension

**\* We no longer accept returns on products shipped to swine facilities as part of our biosecurity commitment.**

# Recommended Tag Placement

Application site must be free of foreign debris prior to placement of tags on the animal. Review application instruction prior to tagging.

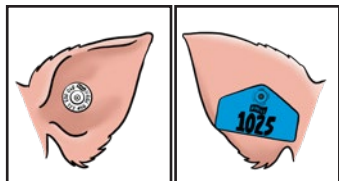
**IMPORTANT:** Caution, "Free Air Space" is critical for proper healing and retention. Inspect placement after tagging to ensure there is sufficient space between ear and EID tag.

## FOR CATTLE



1. The EID tag should be placed in the middle of the ear between the two cartilage ribs close to the head.
2. The female portion of the tag should be on the inside of the ear with EID tag application. Note that this is a thicker part of the ear. Application may be more difficult than when applying a visual tag.

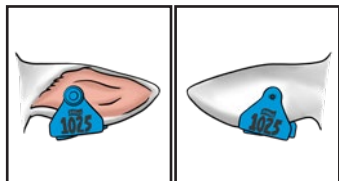
## FOR SWINE



1. Place the EID tag in the middle or thicker part of the ear.
2. The male tag should be on the outside of the ear and the female (or EID tag) should be placed on the inside of the ear. Tag retention is improved when male tag lays flush against the back side of the ear.

**IMPORTANT:** Tag application may vary based on breed type and ear size.

## FOR SHEEP



1. Place the EID tag in between the cartilage ribs of the ear, near the first quarter of the ear (closest to the head).
2. The female portion of the tag should be placed on the inside of the ear.



Apply Allflex Electronic ID Tags with the UTT3S or Red Universal Total Tagger. Use the red blunt pin and remove the black insert from the base of the jaws.

*Hooking the clip on a metal surface and pulling against it, is the best way to "pop" the clip out of the applicator.*



**Universal Total Tagger Black Insert**  
SKU: CLIP-UTT-K  
SKU: CLIP-UTT-W  
(White clip is for insecticide tags)





## Easy Steps Tag/TSU • Lookup User's Guide

### Finding Your Tag/TSU Numbers

**Step 1.** Navigate to [www.allflexusa.com](http://www.allflexusa.com) and Find " Tag Lookup" at the top of the screen

➤ Tag Lookup

**Step 3.** You may also enter **Multiple Bag#s**. Hit <enter> between the bag#s or copy and paste a list from a text or Excel file

**Step 4.** Click on Lookup

**Step 5.** The numbers you entered will show **green** on the grid after you click on Lookup, as shown. You are now ready to download your numbers. You can expand the **green** rows and see details by clicking on the plus sign. Only rows selected in **green** will be downloaded.

	Bag#
+	1000029338
+	1000029349
+	1000029350
+	1000029361
+	1000029372
+	1000029383

**Step 2.** Locate the Master#, Pallet#, Case#, Bag# or Tag# on labels as shown and enter them individually

Easy Step Instructions

Enter Master#, Pallet#, Case#, Bag# or Tag# or enter multiple bag numbers.

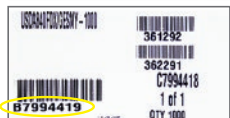
Master#, Pallet#, Case#, Bag# or Tag#

C1000228330

Multiple Bag #s

1004374780  
1004374791  
1004374805  
1004374816  
1004374827

Lookup



\* = Bag(s) Not Found

Master#, Pallet#, Case#, Bag# or Tag#

Multiple Bag #s

1000029338  
1000029349  
1000029359\*  
1000029361  
1000029372

Lookup

**Bag(s) Not Found**  
Bag(s) Not Found are marked with an \* in the list. You can fix the entry and re-submit by clicking Lookup and/or proceed with the selection

### Downloading Your Tag/TSU Numbers

#### Step 6.

Select the file type and format in which you would like your numbers to be saved.

CSV = Comma Separated Value  
XLS = Excel Spreadsheet  
XML = Web Document

Select File Type and Format and Click Download

CSV XLS XML

Original

The selected format contains: Bag#, Eid#, Mgmt#, Reg#

Download

#### Step 7.

Click download and open or save to your computer

Internet Explorer:

Do you want to open or save VBags 11\_5\_2015 11 21 32 AM.CSV from allflexlink.com

Chrome:

VBags\_11\_5\_20...C...



# It All Starts With A Tag.



**Allflex USA, LLC**  
2805 E. 14th Street  
P.O. Box 612266  
DFW Airport, TX 75261-2266  
(800) 989.TAGS

**Allflex Canada**  
4135 Bérard  
St-Hyacinthe, QC J2S 8Z8  
(866) 505.TAGS

[WWW.ALLFLEXUSA.COM](http://WWW.ALLFLEXUSA.COM)

Allflex USA, LLC is the licensed user of the Allflex trademark.  
Copyright © 2024 Merck & Co., Inc., Rahway, NJ, USA and its affiliates. All rights reserved.  
US-Allflex-2404000014.22.24

